

FOR A GIVEN:

Liquid Level More Wet Mix Time = Increased material wetting, higher power used, more uniform particle distribution.

Less Wet Mix Time = Decreased material wetting, lower power used, less uniform particle distribution.

Wet Mix Time Higher Liquid Level = Increased material wetting, higher power used, larger granule size.

Lower Liquid Level = Decreased material wetting, lower power used, smaller granule size.

Identical pharmaceutical granulations generate identical power curves: This fact takes the guesswork out of knowing when the proper granulation objective has been achieved.

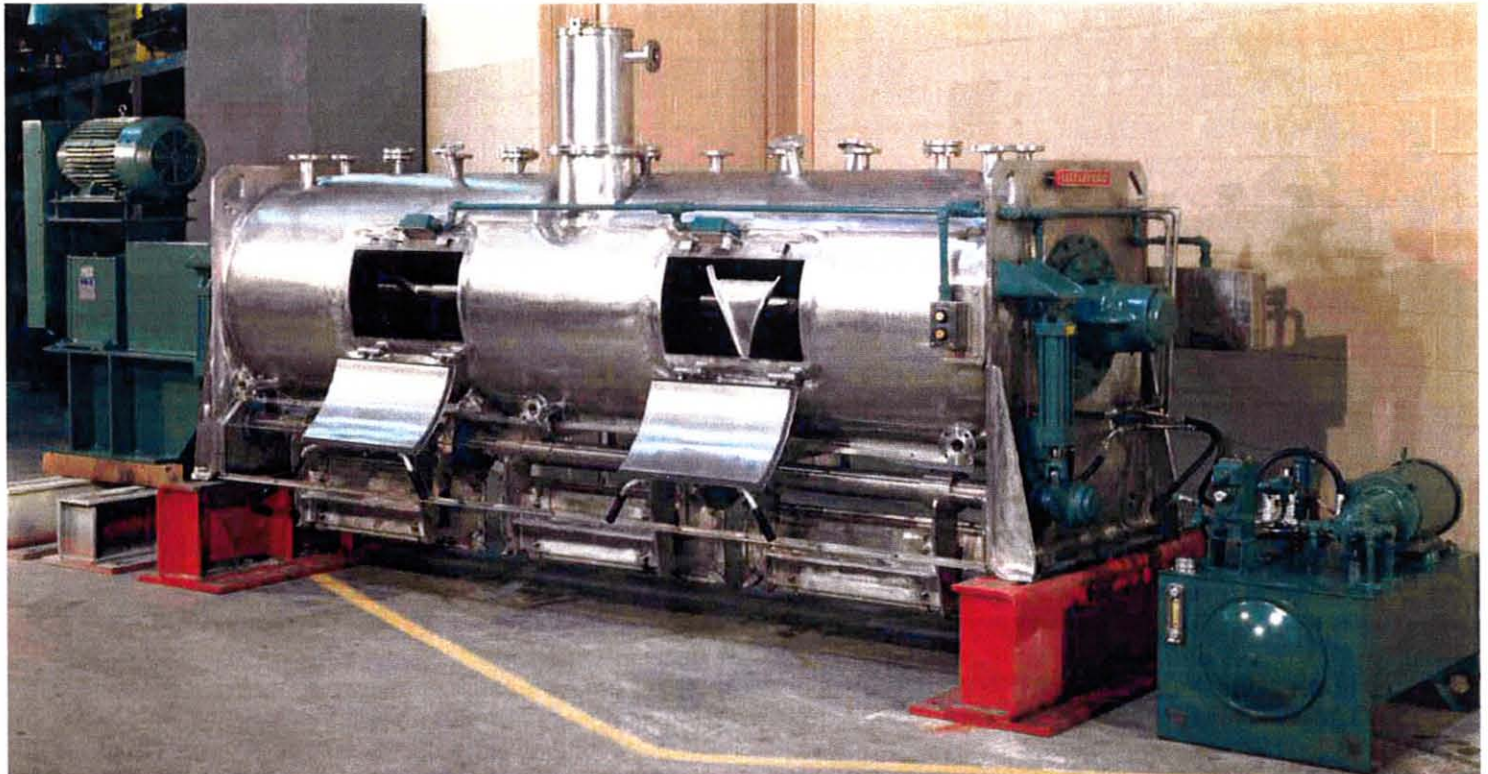
Optional instrumentation includes watt totalizing, programmable logic controls, recording wattmeter, chart recorders, and load cell mounting, etc. Installation Qualification and Operational Protocol (IQOQ) is also offered.

Littleford Day granulators create a mechanical fluidized bed mix action producing a homogenous blend, reducing the coefficient of deviation. When drying is required, this fluidized bed plow action yields heat transfer coefficients as much as ten times greater than other dryers. State-of-the-art, highly efficient vacuum and or internal pressure machines, routinely incorporating plows are also available from Littleford Day.

All Pharmaceutical equipment is routinely manufactured in accordance with "GMP" and can be specified to meet or exceed all of the different sanitary regulations as detailed by the FDA, 3A, USDA, BISSF and the Pharmaceutical Industry, making Littleford Day equipment the best Pharmaceutical equipment on the market today.

Littleford Day provides validation documentation consisting of Mill Test Reports (MTR), machine run-off test reports, and inspection by a Regional Manager at the customer's plant with every order.

For research and development, product formulation, quality control, or direct production scale-up needs, visit our Technical Center. For testing pharmaceutical processes in your own manufacturing environment, rent a Littleford Day trial demonstration Mixer or Dryer.



Littleford Day
Where Processing Ideas Become Reality

Littleford Day, Inc.

7451 Empire Drive (41042-2985), P.O. Box 128, Florence, KY 41022-0128
859-525-7600 • Fax: 859-525-1446 • 1-800-365-8555

Technifax No. 132