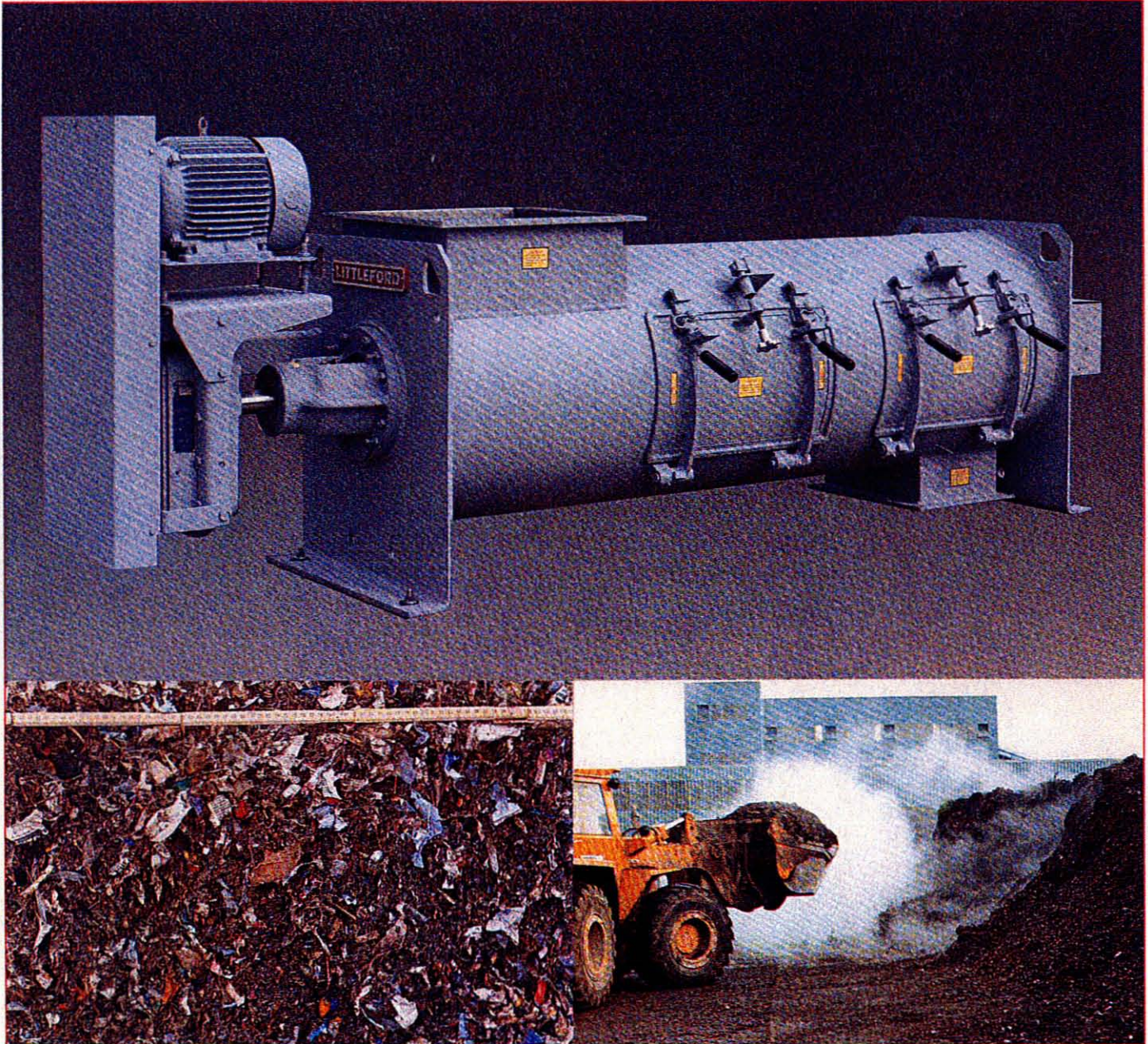


Littleford KM Conditioner Key to Composting System



Description: The Littleford KM Series continuous conditioner is the key to an effective composting system. These continuous plow conditioners are especially designed and ruggedly constructed to provide the mixing accuracy needed in the tough combination of carbonaceous material and dewatered sludge.

The design and construction of the Littleford KM continuous conditioner assures long-term, low-maintenance processing of carbonaceous material with sewage sludge that results in a thoroughly mixed material that is effectively destroyed biologically in the subsequent composting process. Hundreds of these conditioners are in successful operation at sewage plants around the world.

Features: Some of the key mechanical features of the KM Series continuous conditioner as it applies to composting systems include:

- Large Easy Open Doors for Easy Cleaning
- Specially Engineered Charging Port for Easy Charging with Odor Control
- Effectively Designed Baffle Discharge to Vary the Retention Time of Mix
- Safety Limit Switches on All Access Doors
- Heavy Steel, Welded Construction to Provide Years of Trouble-Free Service
- Bottom Discharge for Easy Material Handling

Littleford Continuous Compost Conditioner

Operation: In this composting system, the task is to mix carbonaceous material and recycle compost with the dewatered sludge in such a way that the resultant product, when it arrives at the bio-reactor, is uniformly wet and loose without coated lumps or dry nests of material.

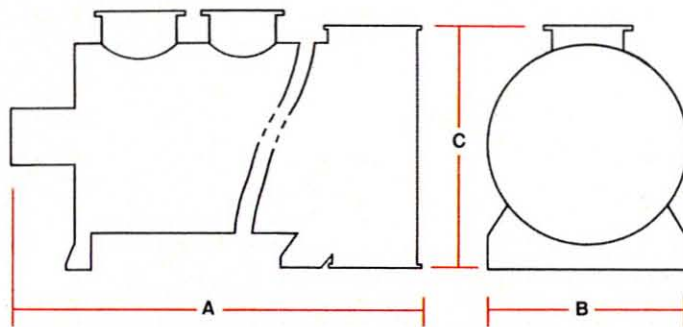
The carbonaceous material is fed to the Littleford continuous conditioner by troughed belt conveyors, according to volume. The previously dewatered sludge with a solid content up to 30% is usually fed to the conditioner by a variable metering screw. The recycle compost is usually conveyed by air. These components are mixed together to provide the proper bed porosity moisture content and C/N (Carbon/Nitrogen) ratio. The mix may be very abrasive due to the frequently high content of sand and glass.

Littleford's KM Series continuous conditioners are charged through a port mounted on the top side of the drive end of

the conditioner. Littleford's advanced mixing elements put the product into three-dimensional motion, resulting in the superior mix achieved during a short retention period. Discharge of product is through a specially designed discharge at the opposite end of conditioner from where the product was charged.

It is essential that a suitable conditioning system is chosen since, if the material is not thoroughly mixed, there will be an uneven distribution of the water content. The growth of the microbes in the product is affected by this and there is insufficient heat development. This, in turn, means insufficient disinfection of the product. Additionally, compressed lumps and dry nests of product, typical features of inadequate mixing, cannot be destroyed biologically in the subsequent composting process.

General Specifications



| Model No. | Approx. Throughput (ton/hr*) | Approx. Vessel Dimensions | | | Mixer Weight (approx. lbs.) |
|-----------|------------------------------|---------------------------|-----|-----|-----------------------------|
| | | A | B | C | |
| KM-300 | 6 | 76" | 25" | 30" | 1490 |
| KM-600 | 12.5 | 95" | 30" | 35" | 1915 |
| KM-1200 | 25 | 117" | 36" | 43" | 3115 |
| KM-2000 | 40 | 138" | 46" | 51" | 5080 |
| KM-3000 | 60 | 140" | 53" | 60" | 7080 |
| KM-4200 | 80 | 163" | 59" | 68" | 10760 |

*The throughput data refers to a bulk density of 40#/FT³

Note: Other sizes of the KM conditioner available upon request.

Littleford Day

Where Processing Ideas Become Reality

Littleford Day, Inc.

7451 Empire Drive (41042-2985), P.O. Box 128, Florence, KY 41022-0128

859-525-7600 • Fax: 859-525-1446 • 1-800-365-8555

Website: www.littleford.com • E-mail: sales@littleford.com

Dimensions, weights, production capacities and other specifics cited in this literature are illustrative only and may be subject to many variables. The only warranty applicable is our standard written warranty. We make no other warranty, expressed or implied.